

Welcome to

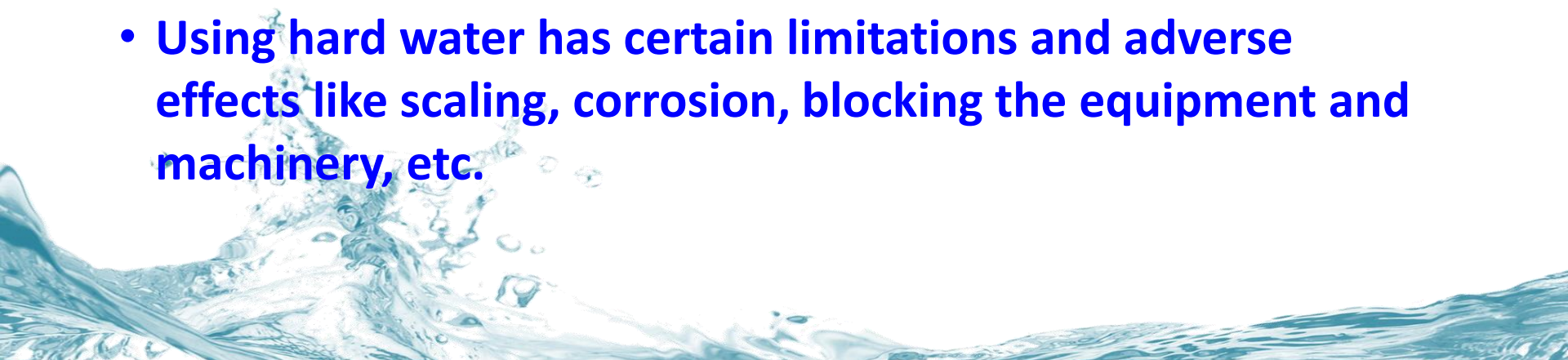
Parahsakthy

The Power of
Water Conversion Technology



WATER

- Scarce resource
- Can not create or produce
- Out of 366 quintillion gallons of water occupying 71% of earth area, only 2.5% is usable
- Out of 2.5%, only 0.007% is potable and rest is hard water
- So, we are highly dependent on hard water for our industrial, agricultural and usage purposes.
- Using hard water has certain limitations and adverse effects like scaling, corrosion, blocking the equipment and machinery, etc.



Hard Water Affects...

Water described as "hard" is high in dissolved minerals, specifically calcium and magnesium.

Hard water may not be health risk, but a nuisance because of mineral build up on fixtures as scaling and poor soap performance.

- **Industrial Sector**
 - Breakdown of boilers / cooling towers etc., due to scaling and algae
 - More power consumption and less water delivery
- **Domestic Sector**
 - Lack of lather when used with soap
 - Cloths does not come out cleaner and brighter
 - Lime scales in kettles, floor tiles and water heaters
 - Dishes and glasses may be spotted when dry
 - Reduced water flow in pipes due to scales
- **Agriculture Sector**
 - Salinization of soil surface & Low water infiltration
 - Higher water requirement through frequent irrigation
 - Decreased growth and yield
 - Damage to soil health
 - Uneven irrigation due to drip/nozzle clogging

Hard Water Affects....



- Hard water forms deposits, called "scale", which consists mainly calcium carbonate (CaCO_3), magnesium hydroxide [$\text{Mg}(\text{OH})_2$] and calcium sulfate (CaSO_4).
- Calcium and magnesium carbonates tend to be deposited as off-white solids on the inside surfaces of pipes and heat exchangers.
- The resulting build-up of scale restricts the flow of water in pipes and in boilers, humidifiers, kettles, etc.
- Because of reduced heating efficiency, the metal boiler components tend to overheat and finally leading to failure of the boiler.

Existing Methods of Hard Water Softening....

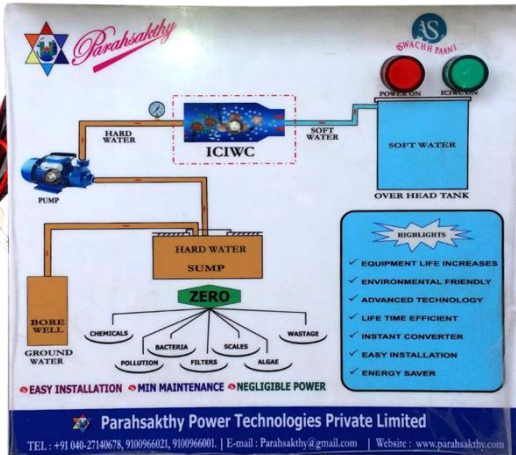
Method	Technology	Adverse Affects
Chemical treatment	Adding sodium/calcium carbonate (washing soda) to water	<ul style="list-style-type: none"> • Calcium carbonate and magnesium carbonate are insoluble • Calcium/magnesium carbonate precipitates to form lime scale • Clog up pipes in heating systems • Frequent maintenance & replacement of equipment • Scales are inevitable • Wastage in water • Resultant residues • Continuous monitoring and maintenance • Recurring expenditure on chemicals, filters, membrane, etc.
Ion Exchange	Replaces magnesium and calcium with sodium or potassium ions which are packed into cylinders	
Reverse osmosis (RO)	Hydrostatic pressure gradients across special membrane to filter hardness ions	
Magnetic water treatment	Water pass through strong magnetic field by placing two strong neodymium magnets on either side of the incoming pipe	



Is there any solution to overcome the problems of existing hard water softeners ?

YES

Control Panel



इच्छाचे पाणी

Instant Clean Innovative Water Converter (ICIWC)

An unique non-chemical nano-catalytic, first-of-its-kind patent registered hard water to soft water converter



**Parahsakthy
Power
Technologies
Pvt. Ltd.**



We, **M/s Parahsakthy Power Technologies (Pvt.) Ltd., (PPTL)**, Hyderabad is an NSIC & MSME Registered, ISO Certified manufacturer and supplier of **Swachh Paani** also called as ICIWC (Instant Clean Innovative Water Converter)

With the background of more than three decades in the instrumentation, PPTL is committed to serve the nation to save limited and valuable resources like, energy, fuel and water by way of introducing the **Swachh Paani** – an unique non-chemical nano-catalytic and first-of-its-kind patent registered hard water to soft water converter for all the areas where water is used..

Our core team of engineers, technicians and committed field force strive hard in generating application oriented technology to suit the needs of clients whose production is dependent on water to save their valuable equipment from scales and algae and minimize expenditure on power and fuel.

“ಬಿಂದು ಬಿಂದುವು ನು ಆದಾ ಚೆಸ್ತುಂಬಿ”

“SAVES DROP BY DROP”

“बूंद बूंद को बचाता है”



What is *Swachh Paani* ?

- Unique non-chemical nano-catalytic first-of-its-kind patent registered product
- As water passes through *Swachh Paani* converter subjected to turbulent interaction in a catalytic chamber with a DC power supply with micro processor.
- Most of the physical properties of the hard water will get changed by particle division from ~600 to 5 microns and removes the chemical bonding which changes the calcite condition of hard water to aragonite condition, thereby, the very effectiveness of their presence in the hard water is totally removed.



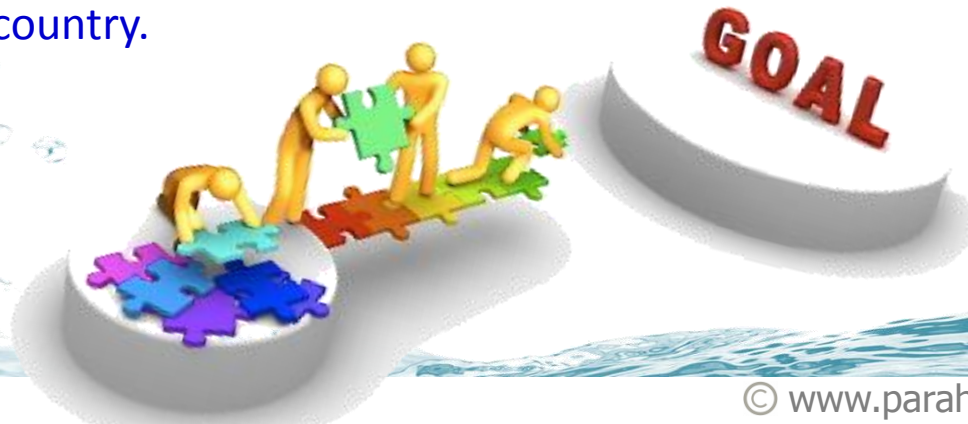
Our Moto....

*It is reported that
due to removal of
scales and increased
outflow of water,
the power
consumption is
reduced by about
20%
resulting save in
power and money.*

We are committed to serve the industry/people who are spending lot of money on softening the water and the unending efforts like chemical treatments to over come the problem of scaling and algae in the pipeline.

Once the problem of scaling and algae is eradicated by fixing our **Swachh Paani** Converter, the industry and people not only save lot of money on chemicals for removing the scaling, but also on power, fuel and water.

This would not only help the industry or the individuals to gain, but also leads to indirect saving on valuable resources like, energy, fuel, water and environmental safety for the country.



What we do ?

We manufacture and supply **Swachh Paani** – Hard water to Soft water converter.

Our clients benefit from our experience in a wide array of sectors as well as from our diverse functional capabilities. Our experience in such diverse industries as a supplier of hard water to soft water converter, provides us with the knowledge to solve our clients' toughest problems of hard water usage like scaling, algae and blocking of pipeline. We improve the quality of water with energy saving.

The diversified team of our dedicated engineers are committed to serve better when need arises even after installation of the equipment.

We can proud to extend our services to....

Cement Industry
Food Industry
Rice Millers
Steel Industry
Hospitals

Power Industry,
Pharma Industry
Agricultural Sector
Schools
Hotels & Restaurants, etc.



Swachh Paani

Converter
is suitable at
every place
where water
is used

Boilers

Rice Mills

Power Plants

Cooling Towers

Dairy Industries

Cement Industries

Agricultural Sector

Drip / Micro Irrigation

Pharma & Chemical Industries

Apartments & Independent Houses

Schools, Hospitals, Hotels / Restaurants

Our Strengths....



- Removes Existing Scales & Improves Water Output
- Easy Installation (No Modification in existing pipe)
- Life Time Efficient & Full Time Scale Free Equipment
- Separates Chemical Bonding & Improves pH Level
- Chemical or Filter Free Instant Conversion Process
- Lather and Soap Action as Equal to Soft Water
- Increases Life Time of all your Equipment
- No Further Scales build up for Life-Time
- Removes Bio-film and Avoid Algae
- Negligible power consumption
- No Loss of Useful Minerals in Water
- Saves Water, Energy and Money
- Maintenance Free (Fit & Forget)
- More Water for Less Energy
- Eco-Friendly (Green Product)

Existing Softeners vs. *Swachh Paani* Converter

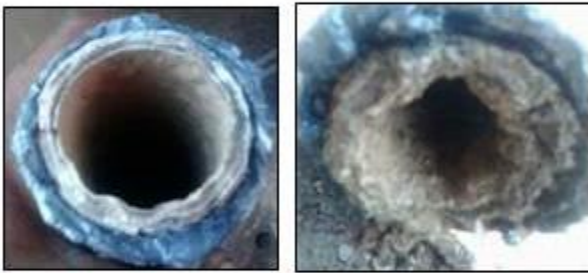
Removes essential calcium and magnesium and macro minerals of water	No removal of any such useful minerals of water
Adds sodium to water which is highly harmful to human	No chemicals are added or used
Recurring expenditure on chemicals	No recurring expenditure (Fit & Forget)
Continuous monitoring and maintenance	No maintenance is required
Will not remove already deposited scales	Removes the existing scales
Only delays scale formation, but scales are inevitable	Never allow any scale formation for life time
Comparatively more power consumption	Very negligible power (or) No power
Accumulate some residues	No residues
Wastage in water (~ 120 liters of 1000 liters delivered)	No wastage in water
Very slow process of converting hard water as soft water	Instant conversion of hard water to soft water
May not be green product	Eco-friendly product

Potential
of

***Swachh
Paani***

compared
to existing
water
softeners

Advantages for Industry...



- Stops hard water scale and corrosion
- Remove existing scales and no further scales in pipeline
- Suitable to all industries wherever water is used
- Keeps cooling towers, piping and condensers clean & scale free
- Improves life time and performance of any equipment
- More water out flow for lesser energy consumption
- Saving in three valuables (water, energy/fuel and money)
- No need for chemical, salt or acid for pipeline/valves to clean scales
- Algae free and clean water storage tanks and pipelines
- Easy to install without any alteration to existing pipeline
- Virtually maintenance free for almost life time
- One time investment for life time profits
- Reduces energy costs
- 100% eco-friendly

If we assume that a company's hard water pipeline is blocked by just $\frac{1}{4}$ inch due to scaling and running on chemical softeners to overcome scaling problem...

Company's Net Loss:	
It requires 40% more power/fuel Delivers 38% less water than optimum outflow Wastage of 120 liters of 1000 liters delivered ~ Rs.3.0 lakhs/year on maintenance staff salary ~ Rs. 2 to 3 lakhs/year on chemicals	40% on power/fuel 38% on water Expenditure on Chemicals Loss in total delivered water Salaries to maintenance staff

If **Swachh Paani Converter** is used....

Company's Net Gain:

Since no scales	Delivers full volume of water in less time
Since no wastage in water	All the water is available for production
Since motor running time is less	No extra expenditure on fuel/power
Since chemicals are not required	No recurring expenditure on chemicals
Since it is maintenance free	No expenditure on manpower for maintenance
Since conversion process is instant	Saves time, energy/fuel



Parahsakthi

Our Installations....



Advantages for Agriculture...



- Increases yield by 25 to 40%
- Less Fertilizer, water & Nutrients required
- Fast & deep penetration (directly to root zone) and decreases irrigated water requirement (15 to 40%)
- Removes existing scales & never allow any scaling in drip/micro irrigation pipeline or nozzles for life time
- Saving of three valuables (water, energy /fuel and money)
- Greener, healthier and robust crop growth with fast and smooth water flow
- Reduce leaf burn and improves the yield
- Algae free and clean water storage tanks and pipelines
- Easy to install without any alteration to existing pipeline
- No maintenance (fit & forget)
- No need for any chemical, salt or acids for scaling problem
- One time investment for life time profits
- Breaks up soil clods and retain soil moisture for longer periods
- Results revealed that water flow would be 84% faster with this converter
- Due to improved permeability, unwanted salts that are previously accumulated around the root zone & soil are flushed and do not reform



Parahsakthi

Some of Our Installations..

Industrial Installations



Agricultural Installations



Household Installations



Advantages for Household...

- It is a Hard water to Soft water converter but not softener/filter
- Maintains clean bathtub, shower and walls
- Whiter and softer cloth washings with less detergent and more lather
- Dishwashers and washing machines remain clean and scale free
- Stops scaling in piping, removes existing scale, improves water pressure
- More water discharge for less energy consumption
- Protects water heaters from corrosion and adds life to equipment
- Never allow any salt encrustation on air conditioners
- ICIWC simply becomes part of your pipeline and can be fitted very easily without any modifications/alterations to the existing system.
- Since, ICIWC is designed with high quality stainless steel, it will not attract any rust, requires no maintenance and lasts for lifetime.





Parahsakthi

Water Test Reports..

WATER REPORT

SRI BABA (PCR) AQUA LAB

Near Red Bridge - AMALAPURAM

A. Vamsi, M.Sc., (Aqua) Cell : 92466 57888

Name NATCO PHARMA Ltd., Area KOTTURU Date 14-8-15

S.No.	Parameters	Before-Converter	After Converter	Remarks
1.	Particl Division in Microns	Big	Seperate	
2.	Hardness (Bonding Structure)	Closed	Seperate	
3.	PH	7.8	7.6	
4.	Turbidity	Nil	Nil	Used for
5.	Taste	Light Hard	Tasty	Drinking
6.	Colour	Transperent	Transperent	
7.	Smell	No smell	No smell	
8.	Bacterial Test	Nil	Nil	
9.	Conductivity Salinity	1 PPT.	1 PPT	
10.	Ammonia (NH ₃)	Nil	Nil	
11.	Alkalinity	336	328	
12.	Iron	0.03	Nil	
13.	Hardness	300	300	
14.	T.D.S.	35	32	

Signature
SRI BABA PCR AQUA LAB
Near Red Bridge, Main Road
AMALAPURAM-533 20*

WATER REPORT

SRI BABA (PCR) AQUA LAB

Near Red Bridge - AMALAPURAM

A. Vamsi, M.Sc., (Aqua) Cell : 92466 57888

Name GRAP GARDENS Area SHAMEERPET Date 14-8-15

S.No.	Parameters	Before-Converter	After Converter	Remarks
1.	Particl Division in Microns	Big	Small	
2.	Hardness (Bonding Structure)	Closed	Seperate	
3.	PH	7.4	7.3	
4.	Turbidity	Nil	Nil	Used for
5.	Taste	Light Hard	Tasty	Drinking
6.	Colour	Transperent	Transperent	
7.	Smell	No smell	No smell	
8.	Bacterial Test	Nil	Nil	
9.	Conductivity Salinity	1 PPT	1 PPT	
10.	Ammonia (NH ₃)	Nil	Nil	
11.	Alkalinity	328	300	
12.	Iron	Nil	Nil	
13.	Hardness	630	600	
14.	T.D.S.	68	67	

Signature
SRI BABA PCR AQUA LAB
Near Red Bridge, Main Road
AMALAPURAM-533 20*



Parahsakthi

Clientele..



Heritage Foods
Sagar Cements
Ramco Cements
Maha Cements
Parashakthi Cements
Praneeth Pranav Group
SLV Constructions
PNR Apartments
Balaji Apartments
Alekyia Drugs
KV Foods
Jai Foods Chocolate Co.
Chandak Chemicals

Lee Pharma
NRI Hospitals
Aster Industries
Siva Sai Industries
Prompt Industries
Kanakan Durga Industries
Cauvery Iron & Steels
Varalaxmi Constructions
Kondapally Forgings
Pegaus Engg. & Comm. Corpn.
Madhura Dairy Pvt. Ltd.
Rajadhani Hotels
Surya Polyflex

SVS Polymer
GP Traders
Cabson Gas
NTR School
Adithya School
Brilliant Grammar School
Jagadamba Rice Mill
Sai Padmavathi Rice Mill
Sri Manikanta Rice Mill
Sri Anjaneya Rice Industries
Venkateswara Parboiler Rice Mill
Vijaya Laxmi Anjaneya Ice Factory
Sri Seeta Ramanjaneya Rice Mill &

Many other installations....



Testimonials ..



THE RAMCO CEMENTS LIMITED

(formerly known as Madras Cements Ltd.)

Kumarasamy Raja Nagar - 521457
Jaggayyapeta Mandal, Krishna District,
Andhra Pradesh, India
Phone: 08554 214400-09
Fax: 08554-123332
E-mail: raj@ramcocements.co.in

November 19, 2014

TO WHOM SO EVER IT MAY CONCERN

THIS IS TO CERTIFY THAT WE ARE IN USE OF "NANO CATALYTIC INSTANT WATER CONVERTER" AT OUR JAYANTHIPURAM & KOLAGHAT FACTORIES WHICH IS MANUFACTURED, SUPPLIED AND INSTALLED BY M/S. **PARAHSAKTHY POWER TECHNOLOGIES PRIVATE LIMITED**, HYDERABAD.

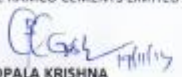
THIS IS IN LINE AND CUSTOMISED EQUIPMENT, WHICH WILL FIXED AT SOURCE LOCATION OF BORE OUT LET OR SUMP OUT LET AND BEING COMMISSIONED TO OUR RAMCO PLANTS IN VARIOUS PLACES IN THE APPLICATIONS AREAS LIKE PLANT UTILITY, C.T., COMPRESSORS, COOLING TOWERS, POWER PLANT ETC FOR THE PURPOSE OF **PREVENTION OF SCALES AND ALGAE** IN WATER PIPE LINES, NOZZLES, FILTERS, R.O. MEMBRANE, PUMP, IMPELLERS, AIR COMPRESSOR COOLING SYSTEMS, CEMENT MILL SPRAY NOZZLES WHICH IS FORMED DURING THE FLOW OF HARD WATER.

AFTER THE INSTALLATION OF "NANO CATALYTIC INSTANT WATER CONVERTOR" WE HAD FOUND RESULTS MORE OF SAVING THE WATER RESOURCES AND REDUCED THE COST OF MAINTENANCE TO OUR EQUIPMENTS, ALSO "NCIWC" HAS CHANGED THE TASTE OF HARD WATER PROBLEMS AT OUTPUT AND MADE TO USEFUL WATER AND INCREASED THE LIFE OF INDUSTRIES GADGETS LIKE FILTERS, HEAT EXCHANGERS ETC.

WE FOUND THE PERFORMANCE RESULT OF THE "NANO CATALYTIC INSTANT WATER CONVERTOR" IS SATISFIED TO THE VARIOUS APPLICATIONS. ALSO, HAPPY TO RECOMMEND THE SAME FOR MFG INDUSTRIES TO UTILISE THE "NCIWC" AND GET SAVE MORE OF ENERGY & RESOURCES.

WE WISH M/S. **PARAHSAKTHY POWER TECHNOLOGIES PRIVATE LIMITED**, HYDERABAD TO GET ALL SUCCESSES AND TO REDUCE HASSELS IN MAINTENANCE OF EQUIPMENTS IN WATER CIRCUITS.

FOR THE RAMCO CEMENTS LIMITED


P.B. GOPALA KRISHNA

PRESIDENT-MFG

Registered Office: "Kannanambalam", Rajagopalapuram - 625 111, Tamil Nadu.
Corporate Office: "Aruna Corporate Centre", Plot No. 18-A, D. Rajagopalapuram Road, Vijayawada - 520 004, Tel: 25479666, Fax: 25479676
Rameswaram Raja Nagar (Plot) - 520 304, Vinayakapuram Dist. Tamil Nadu. Tel: 249621, 249622, 249623, 249624, 249625, 249626, 249627, 249628, 249629, 249630, 249631, 249632, 249633, 249634, 249635, 249636, 249637, 249638, 249639, 249640, 249641, 249642, 249643, 249644, 249645, 249646, 249647, 249648, 249649, 249650, 249651, 249652, 249653, 249654, 249655, 249656, 249657, 249658, 249659, 249660, 249661, 249662, 249663, 249664, 249665, 249666, 249667, 249668, 249669, 249670, 249671, 249672, 249673, 249674, 249675, 249676, 249677, 249678, 249679, 249680, 249681, 249682, 249683, 249684, 249685, 249686, 249687, 249688, 249689, 249690, 249691, 249692, 249693, 249694, 249695, 249696, 249697, 249698, 249699, 249700, 249701, 249702, 249703, 249704, 249705, 249706, 249707, 249708, 249709, 249710, 249711, 249712, 249713, 249714, 249715, 249716, 249717, 249718, 249719, 249720, 249721, 249722, 249723, 249724, 249725, 249726, 249727, 249728, 249729, 249730, 249731, 249732, 249733, 249734, 249735, 249736, 249737, 249738, 249739, 249740, 249741, 249742, 249743, 249744, 249745, 249746, 249747, 249748, 249749, 249750, 249751, 249752, 249753, 249754, 249755, 249756, 249757, 249758, 249759, 249760, 249761, 249762, 249763, 249764, 249765, 249766, 249767, 249768, 249769, 249770, 249771, 249772, 249773, 249774, 249775, 249776, 249777, 249778, 249779, 249780, 249781, 249782, 249783, 249784, 249785, 249786, 249787, 249788, 249789, 249790, 249791, 249792, 249793, 249794, 249795, 249796, 249797, 249798, 249799, 249800, 249801, 249802, 249803, 249804, 249805, 249806, 249807, 249808, 249809, 249810, 249811, 249812, 249813, 249814, 249815, 249816, 249817, 249818, 249819, 249820, 249821, 249822, 249823, 249824, 249825, 249826, 249827, 249828, 249829, 249830, 249831, 249832, 249833, 249834, 249835, 249836, 249837, 249838, 249839, 249840, 249841, 249842, 249843, 249844, 249845, 249846, 249847, 249848, 249849, 249850, 249851, 249852, 249853, 249854, 249855, 249856, 249857, 249858, 249859, 249860, 249861, 249862, 249863, 249864, 249865, 249866, 249867, 249868, 249869, 249870, 249871, 249872, 249873, 249874, 249875, 249876, 249877, 249878, 249879, 249880, 249881, 249882, 249883, 249884, 249885, 249886, 249887, 249888, 249889, 249890, 249891, 249892, 249893, 249894, 249895, 249896, 249897, 249898, 249899, 249900, 249901, 249902, 249903, 249904, 249905, 249906, 249907, 249908, 249909, 249910, 249911, 249912, 249913, 249914, 249915, 249916, 249917, 249918, 249919, 249920, 249921, 249922, 249923, 249924, 249925, 249926, 249927, 249928, 249929, 249930, 249931, 249932, 249933, 249934, 249935, 249936, 249937, 249938, 249939, 249940, 249941, 249942, 249943, 249944, 249945, 249946, 249947, 249948, 249949, 249950, 249951, 249952, 249953, 249954, 249955, 249956, 249957, 249958, 249959, 249960, 249961, 249962, 249963, 249964, 249965, 249966, 249967, 249968, 249969, 249970, 249971, 249972, 249973, 249974, 249975, 249976, 249977, 249978, 249979, 249980, 249981, 249982, 249983, 249984, 249985, 249986, 249987, 249988, 249989, 249990, 249991, 249992, 249993, 249994, 249995, 249996, 249997, 249998, 249999, 250000, 250001, 250002, 250003, 250004, 250005, 250006, 250007, 250008, 250009, 250010, 250011, 250012, 250013, 250014, 250015, 250016, 250017, 250018, 250019, 250020, 250021, 250022, 250023, 250024, 250025, 250026, 250027, 250028, 250029, 250030, 250031, 250032, 250033, 250034, 250035, 250036, 250037, 250038, 250039, 250040, 250041, 250042, 250043, 250044, 250045, 250046, 250047, 250048, 250049, 250050, 250051, 250052, 250053, 250054, 250055, 250056, 250057, 250058, 250059, 250060, 250061, 250062, 250063, 250064, 250065, 250066, 250067, 250068, 250069, 250070, 250071, 250072, 250073, 250074, 250075, 250076, 250077, 250078, 250079, 250080, 250081, 250082, 250083, 250084, 250085, 250086, 250087, 250088, 250089, 250090, 250091, 250092, 250093, 250094, 250095, 250096, 250097, 250098, 250099, 250100, 250101, 250102, 250103, 250104, 250105, 250106, 250107, 250108, 250109, 250110, 250111, 250112, 250113, 250114, 250115, 250116, 250117, 250118, 250119, 250120, 250121, 250122, 250123, 250124, 250125, 250126, 250127, 250128, 250129, 250130, 250131, 250132, 250133, 250134, 250135, 250136, 250137, 250138, 250139, 250140, 250141, 250142, 250143, 250144, 250145, 250146, 250147, 250148, 250149, 250150, 250151, 250152, 250153, 250154, 250155, 250156, 250157, 250158, 250159, 250160, 250161, 250162, 250163, 250164, 250165, 250166, 250167, 250168, 250169, 250170, 250171, 250172, 250173, 250174, 250175, 250176, 250177, 250178, 250179, 250180, 250181, 250182, 250183, 250184, 250185, 250186, 250187, 250188, 250189, 250190, 250191, 250192, 250193, 250194, 250195, 250196, 250197, 250198, 250199, 250200, 250201, 250202, 250203, 250204, 250205, 250206, 250207, 250208, 250209, 250210, 250211, 250212, 250213, 250214, 250215, 250216, 250217, 250218, 250219, 250220, 250221, 250222, 250223, 250224, 250225, 250226, 250227, 250228, 250229, 250230, 250231, 250232, 250233, 250234, 250235, 250236, 250237, 250238, 250239, 250240, 250241, 250242, 250243, 250244, 250245, 250246, 250247, 250248, 250249, 250250, 250251, 250252, 250253, 250254, 250255, 250256, 250257, 250258, 250259, 250260, 250261, 250262, 250263, 250264, 250265, 250266, 250267, 250268, 250269, 250270, 250271, 250272, 250273, 250274, 250275, 250276, 250277, 250278, 250279, 250280, 250281, 250282, 250283, 250284, 250285, 250286, 250287, 250288, 250289, 250290, 250291, 250292, 250293, 250294, 250295, 250296, 250297, 250298, 250299, 250300, 250301, 250302, 250303, 250304, 250305, 250306, 250307, 250308, 250309, 250310, 250311, 250312, 250313, 250314, 250315, 250316, 250317, 250318, 250319, 250320, 250321, 250322, 250323, 250324, 250325, 250326, 250327, 250328, 250329, 250330, 250331, 250332, 250333, 250334, 250335, 250336, 250337, 250338, 250339, 250340, 250341, 250342, 250343, 250344, 250345, 250346, 250347, 250348, 250349, 250350, 250351, 250352, 250353, 250354, 250355, 250356, 250357, 250358, 250359, 250360, 250361, 250362, 250363, 250364, 250365, 250366, 250367, 250368, 250369, 250370, 250371, 250372, 250373, 250374, 250375, 250376, 250377, 250378, 250379, 250380, 250381, 250382, 250383, 250384, 250385, 250386, 250387, 250388, 250389, 250390, 250391, 250392, 250393, 250394, 250395, 250396, 250397, 250398, 250399, 250400, 250401, 250402, 250403, 250404, 250405, 250406, 250407, 250408, 250409, 250410, 250411, 250412, 250413, 250414, 250415, 250416, 250417, 250418, 250419, 250420, 250421, 250422, 250423, 250424, 250425, 250426, 250427, 250428, 250429, 250430, 250431, 250432, 250433, 250434, 250435, 250436, 250437, 250438, 250439, 250440, 250441, 250442, 250443, 250444, 250445, 250446, 250447, 250448, 250449, 250450, 250451, 250452, 250453, 250454, 250455, 250456, 250457, 250458, 250459, 250460, 250461, 250462, 250463, 250464, 250465, 250466, 250467, 250468, 250469, 250470, 250471, 250472, 250473, 250474, 250475, 250476, 250477, 250478, 250479, 250480, 250481, 250482, 250483, 250484, 250485, 250486, 250487, 250488, 250489, 250490, 250491, 250492, 250493, 250494, 250495, 250496, 250497, 250498, 250499, 250500, 250501, 250502, 250503, 250504, 250505, 250506, 250507, 250508, 250509, 250510, 250511, 250512, 250513, 250514, 250515, 250516, 250517, 250518, 250519, 250520, 250521, 250522, 250523, 250524, 250525, 250526, 250527, 250528, 250529, 250530, 250531, 250532, 250533, 250534, 250535, 250536, 250537, 250538, 250539, 250540, 250541, 250542, 250543, 250544, 250545, 250546, 250547, 250548, 250549, 250550, 250551, 250552, 250553, 250554, 250555, 250556, 250557, 250558, 250559, 250560, 250561, 250562, 250563, 250564, 250565, 250566, 250567, 250568, 250569, 250570, 250571, 250572, 250573, 250574, 250575, 250576, 250577, 250578, 250579, 250580, 250581, 250582, 250583, 250584, 250585, 250586, 250587, 250588, 250589, 250590, 250591, 250592, 250593, 250594, 250595, 250596, 250597, 250598, 250599, 250600, 250601, 250602, 250603, 250604, 250605, 250606, 250607, 250608, 250609, 250610, 250611, 250612, 250613, 250614, 250615, 250616, 250617, 250618, 250619, 250620, 250621, 250622, 250623, 250624, 250625, 250626, 250627, 250628, 250629, 250630, 250631, 250632, 250633, 250634, 250635, 250636, 250637, 250638, 250639, 250640, 250641, 250642, 250643, 250644, 250645, 250646, 250647, 250648, 250649, 250650, 250651, 250652, 250653, 250654, 250655, 250656, 250657, 250658, 250659, 250660, 250661, 250662, 250663, 250664, 250665, 250666, 250667, 250668, 250669, 250670, 250671, 250672, 250673, 250674, 250675, 250676, 250677, 250678, 250679, 250680, 250681, 250682, 250683, 250684, 250685, 250686, 250687, 250688, 250689, 250690, 250691, 250692, 250693, 250694, 250695, 250696, 250697, 250698, 250699, 250700, 250701, 250702, 250703, 250704, 250705, 250706, 250707, 250708, 250709, 250710, 250711, 250712, 250713, 250714, 250715, 250716, 250717, 250718, 250719, 250720, 250721, 250722, 250723, 250724, 250725, 250726, 250727, 250728, 250729, 250730, 250731, 250732, 250733, 250734, 250735, 250736, 250737, 250738, 250739, 250740, 250741, 250742, 250743, 250744, 250745, 250746, 250747, 250748, 250749, 250750, 250751, 250752, 250753, 250754, 250755, 250756, 250757, 250758, 250759, 250760, 250761, 250762, 250763, 250764, 250765, 250766, 250767, 250768, 250769, 250770, 250771, 250772, 250773, 250774, 250775, 250776, 250777, 250778, 250779, 250780, 250781, 250782, 250783, 250784, 250785, 250786, 250787, 250788, 250789, 250790, 250791, 250792, 250793, 250794, 250795, 250796, 250797, 250798, 250799, 250800, 250801, 250802, 250803, 250804, 250805, 250806, 250807, 250808, 250809, 250810, 250811, 250812, 250813, 250814, 250815, 250816, 250817, 250818, 250819, 250820, 250821, 250822, 250823, 250824, 250825, 250826, 250827, 250828, 250829, 250830, 250831, 250832, 250833, 250834, 250835, 250836, 250837, 250838, 250839, 250840, 250841, 250842, 250843, 250844, 250845, 250846, 250847, 250848, 250849, 250850, 250851, 250852, 250853, 250854, 250855, 250856, 250857, 250858, 250859, 250860, 250861, 250862, 250863, 250864, 250865, 250866, 250867, 250868, 250869, 250870, 250871, 250872, 250873, 250874, 250875, 250876, 250877, 250878, 250879, 250880, 250881, 250882, 250883, 250884, 250885, 250886, 250887, 250888, 250889, 250890, 250891, 250892, 250893, 250894, 250895, 250896, 250897, 250898, 250899, 250900, 250901, 250902, 250903, 250904, 250905, 250906, 250907, 250908, 250909, 250910, 250911, 250912, 250913, 250914, 250915, 250916, 250917, 250918, 250919, 250920, 250921, 250922, 250923, 250924, 250925, 250926, 250927, 250928, 250929, 250930, 250931, 250932, 250933, 250934, 250935, 250936, 250937, 250938, 250939, 250940, 250941, 250942, 250943, 250944, 250945, 250946, 250947, 250948, 250949, 250950, 250951, 250952, 250953, 250954, 250955, 250956, 250957, 250958, 250959, 250960, 250961, 250962, 250963, 250964, 250965, 250966, 250967, 250968, 250969, 250970, 250971, 250972, 250973, 250974, 250975, 250976, 250977, 250978, 250979, 250980, 250981, 250982, 250983, 250984, 250985, 250986, 250987, 250988, 25



Parahsakthy



NRI Academy of Sciences

Chinakakani - Mangalagiri Mandal, Guntur District. Andhra Pradesh (India) 522 503.
Phone : 08645 - 236777, 237401, 402, 403, 405, Fax : 237404

Date:01.02.2016

TO WHOM SO EVER IT MAY CONCERN

This is to certify that we have installed the NANO CATALYTIC INSTANT WATER CONVERTER manufactured by M/S Parahsakthy Technologies, Hyderabad at our main sump, which supplies water to the whole hospital including R.O Plant for prevention of Scales, Algae and other problems related to hard water.


After using the converter we found the following results:

1. Algae growing reduced by 75%
2. De scaling observed in old pipe lines
3. Gel formation reduced in membrane of R.O Plant
4. Differential pressure maintained good

The performance of the converter (NCIWC) is quite satisfactory.

We wish M/s: Parahsakthy Power Tech Pvt. Ltd. In all success.

For NRI Academy of Sciences


Authorized Signatory

Testimonials..

SV NILAYAM APARTMENT, BODUPPAL

PHONE NO: 9848748740

10TH JANURAY 2015


TO WHOM SO EVER IT MAY CONCERN

THIS IS TO CERTIFY THAT WE ARE IN USE OF "INSTANT CLEAN INNOVATIVE WATER CONVERTER" AT OUR SRIVENKATESHWARA NILAYAM, MALLIKARJUNA NAGAR, BODUPPAL APARTMENTS WHICH IS MANUFACTURED, SUPPLIED AND INSTALLED BY M/S. PARAHSAKTHY POWER TECHNOLOGIES PRIVATE LIMITED, HYDERABAD.

THIS IS IN LINE AND CUSTOMIZED EQUIPMENT, WHICH WILL FIXED AT SOURCE LOCATION OF BORE OUT LET OR SUMP OUTLET AND BEING COMMISSIONED TO OUR APPARTMENTS IN VARIOUS FLATS OWNERS IN DIFFERENT PLACES LIKE KICTEN, BATHROOMS, FLOOR CLEANING, OVER HEAD TANK ETC FOR THE PURPOSE OF PREVENTION OF SCALES AND BACTERIA, ALGAE IN WATER PIPE LINES NOZZLES IN TAPES, WASHING MACHINE, FILTERS, SUMPS ETC WHICH IS FORMED DURING THE FLOW OF HARD WATER.

AFTER THE INSTALLATION OF "INSTANT CLEAN INNOVATIVE WATER CONVERTER" WE HAD FOUND RESULTS MORE OF SAVING THE WATER RESOURCES AND REDUCED THE COST OF MAINTANENCE TO OUR EQUIPEMENTS , ALSO "ICIWC" HAS CHANGED THE TASTE OF NHARD WATER PROBLEMS AT OUTPUT AND MADE TO USEFUL WATER AND INCREASED THE LIFE OF WASHING MACHINE , CADDLES IN FILTERS, TAPES ETC.

WE SEEN THE PERFORMANCE RESULTS OF THE "ICIWC" IS WORKED PERFECTLY IN VARIOUS LOCATIONS IN DOMESTIC SECTOR.ALSO, HAPPY TO GIVE MANY MORE EXPERIENCE WITH "ICIWC" IN DIFFERENT VILLAS AND APARTMENTS FOR THIS SUCCESSES AND TO REDUCE HASSELS IN MAINTENANCE OF EQUIPMENTS IN WATER USAGE.


ADERALA RAJUREDDY 10/01/2015
(APARTMENT PRESIDENT)

SRI VENKATESHWARA NILAYAM, PLOT NO: 6, H: NO: 3-149/6 , MALLIKARJUNA NAGAR BODUPPAL,
R.R DIST, HYDERABAD. PH NO: 9848748740. MAIL ID: Rajureddyaderla@yahoo.Com



Thanks for your Time...



इवाचे पाणी



PARAHSAKTHY

POWER TECHNOLOGIES PVT. LTD

H.No:1-10-28/232/110, Lane No.6, Shiva Sai Nagar,
Kushaiguda, ECIL Post, Hyderabad-500 062 (TS)

Phone: +91-40-27140678, Mobile: 09394790678 / 09100966001
www.parahsakthy.com E-mail: parahsakthy@gmail.com

Sales & Service :

Plot No. B-004,
K.K. Towers, Tenali By-Pass Road,
Mangalagiri, Guntur Dist. (AP)